

- *The Financial Impact of an EDIS*
- *CMR Welcomes New Customer*
-
-

The Financial Impact of Implementing an Emergency Department Information System

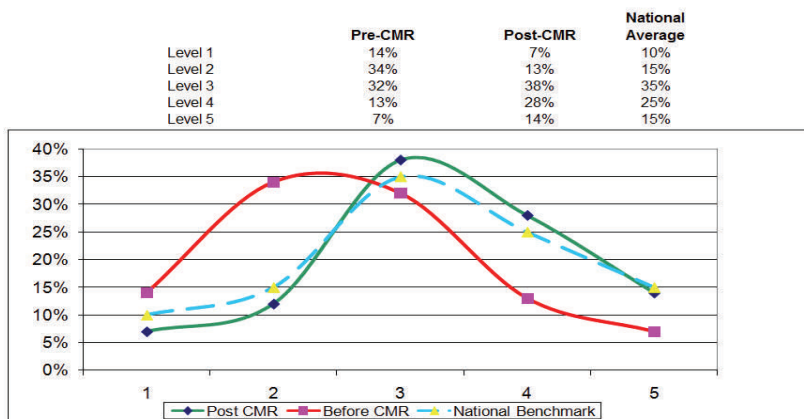
Hospitals are identifying Emergency Department Information Systems (EDIS) as a core piece in capturing increased revenue. The questions remains “How do I get the most bang for my buck?” If you think capturing significant ROI in a short period of time with minimal investment up front is impossible, just ask one of our CMR customers. “The increase in charge capture has more than paid for the cost of the system.” Randy Olson, CEO - Lane Regional Medical Center

We have measured our performance pre and post implementation at all of our facilities and have found astounding, however not surprising, results. Professional coders have complete documentation that is comprehensive and easy to read, therefore improving their ability to identify the components of the ED encounter... Which results in appropriate, increased visit levels.

Karpiel Consulting Group, a nationally recognized leader in process improvement and payment for emergency services, evaluated our record and found our billing and coding related processes to function in a compliant manner and our charge capture from Ambulatory Payment Classifications (APC's) appropriate.

Illustration 1 represents our hospital facility level charges six months pre and post implementation, as well as the national benchmarks for accurate comparison.

CMR Composite Experience - Facility Level Charges Pre- and Post-CMR



From the Editor

CMR wants to thank all of our customers for their continued support and service. Emergency Department reimbursements directly affect hospital growth and success, so as long as our Emergency Departments succeed, so will CMR.

CMR has proven itself time and again that we do make a financial difference in each and every facility we partner with. This issue illustrates the financial impact we bring to the table, both locally and nationally.

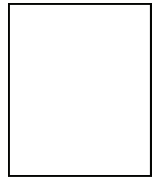
Who We Are

CMR, the Complete Medical Record, is designed for Emergency Departments by Emergency physicians and nurses.

User-friendly CMR helps to create a health care culture that is both connected and comprehensive.

CMR Welcomes New Customer

Harris Regional Hospital in Sylva, North Carolina will complete their implementation process this month in order to improve patient care and safety, departmental efficiency and information manage-



Does Having an EDIS Increase My Length of Stay?

We also evaluated post implementation of higher levels of E&M codes and compared ourselves in individual hospitals. Typically, higher level E&M codes correlates to an increase in admissions and acuity levels to the hospital, however this was not our findings.

Our study indicated that higher E&M levels had a direct correlation to the chart meeting regulatory documentation compliance. Questions about achieving this compliance are often a time management concern...Does having an EDIS increase my length of stay? CMR has found this to not be true. We provide several reports, including patient length of stay, and compared this time and again to hospitals' pre implementation of CMR and have discovered a decrease length of stay when measured to six months post implementation.

TIP OF THE MONTH Physicians, CMR has E&M levels of service references available to you during your documentation. The links are found on the right of the patient chart on each section heading. You may click on this link at any time and see feedback on documentation depending on the recognized LOS of the patient.

CMR
contact

Telephone
225.761.3390
Fax
.....225.761.3095

Current Developments at CMR

- Behavioral Risk Screening
- Sad Persons Assessment Tool
- New additions to Nurses Notes
- New additions to Physicians Review of Systems
- New additions to Physicians Physical Exam
- Updates to Core Measure Forms

Upcoming Conferences

Come Visit Us!

ENA Leadership (Booth #507)

March 4-8, 2009 Reno, NV

NJ Emergency Care Conf (Booth # 309)

March 18-20, 2009 Atlantic City, NJ

HIMSS Annual Conf (Booth # 8407)

April 4-8, 2009 Chicago, IL

Southeastern Seaboard Emergency

Nursing Symposium

May 28-30, 2009 Orlando, FL

ACEP Scientific Assembly

October 5-8, 2009 Boston, MA

ENA Scientific Assembly

October 8-10, 2009 Baltimore, MD